

**SCENE 4**

(THE MARCH PARLOR: #4.)

BETH is at the piano playing. The piano has one broken note which BETH hits and hits again. MR. LAURENCE appears in the doorway)

**MR. LAURENCE**

That piano sounds terrible.

**BETH**

It needs a tuning, sir.

**MR. LAURENCE**

(Entering)

Where is my grandson, Laurie?

**BETH**

I'm sure he'll be home soon.

**MR. LAURENCE**

The boy's missed six lessons - fallen behind in all his work. I have strictly forbidden him to associate with this family.

**BETH**

Why, sir?

**MR. LAURENCE**

Because a man needs an iron will if he's to succeed in this world. And this family will only soften him.... Which one of the dreadful little March girls are you?

**BETH**

I'm dreadful Beth.

**MR. LAURENCE**

Oh, yes, Laurie said you're the one who wants to play my priceless piano. It's out of the question. The piano belonged to my daughter, Laurie's mother. It's been locked since she passed away, and that's how it shall stay...

Are you afraid of me?

**BETH**

A little.

**MR. LAURENCE**

Why?

**BETH**

It might have something to do with your face, sir. It's very hard.

**MR. LAURENCE**  
I cannot help my hard face. Continue what you were playing...  
Come now, I haven't all day. Are you going to play or not?

11

# Off to Massachusetts

Beth  
Mr. Laurence

Mr. Laurence: "Are you going to play or not?"  
(music begins)



If you say, 'come with me, off to Mass-a-chu-sets,' Then to Mass-a-chu-sets



we will go. We will buy dish-es there, may-be ev-en two sets.



Buy the fi-nest chi-na, then we'll dine a-while on crepe suz-ettes.

Mr. Laurence: "Well go on!"



We will build mod-el boats off in Mass-a-chu-sets There in Mass-a-chu-sets

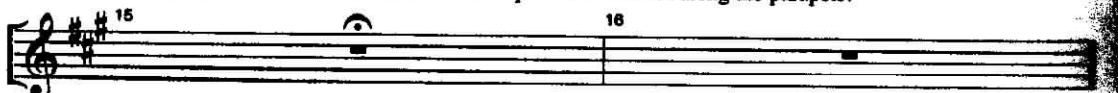


by the bay. Put them to- geth-er and wait un-til the glue sets.

Mr. Laurence: "What's the matter now?"

Beth: "I don't remember the rest, sir."

Mr. Laurence: "While we wait we'll polka for the folk along the parapets!"



17 Beth: 18 19 20

Off Yes, we're off

Mr. Laurence:

to Mass-a - chu-sets. To where the shops are sweet!

21 22

We will play min - u - ets off in Mass - a - chu - setts,

We will play min - u - ets off in Mass - a - chu - setts,

23 24

Bos - ton, Mass - a - chu - setts, Bea - con Street!

Bos - ton, Mass - a - chu - setts, Bea - con Street!

26 28 27

If you say 'come with me,' Then to Mass - a - chu - setts

If you say 'come with me, off to Mass - a - chu - setts,' then to Mass - a - chu - setts

28 29 30 31

we will go. We will buy dish - es there

we will go We will buy dishes there, may-be ev-en two sets

stop here

#11 - Off To Massachusetts